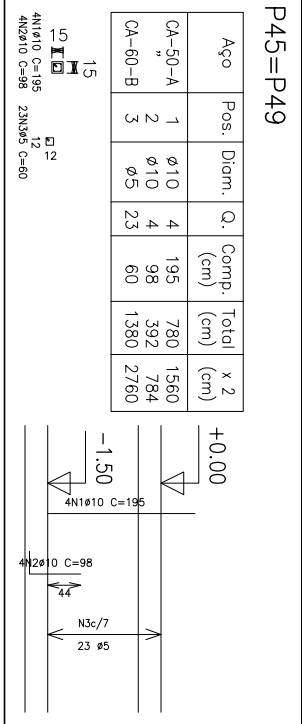
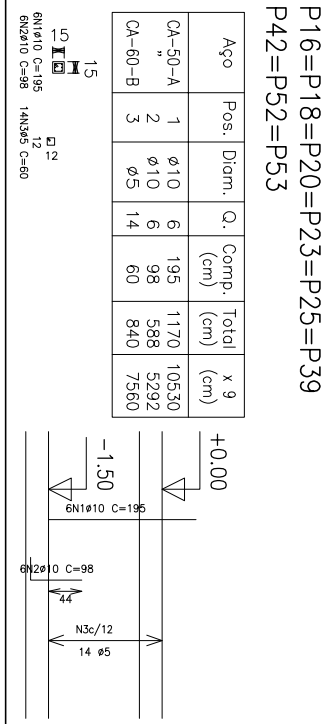
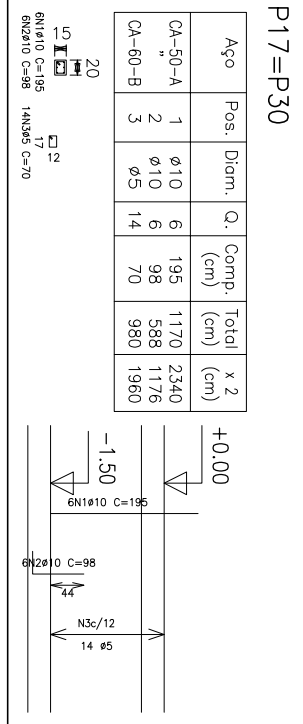
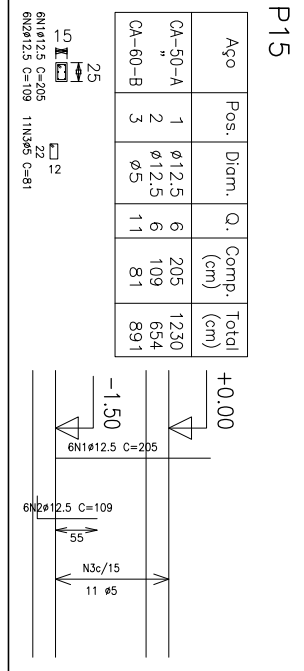
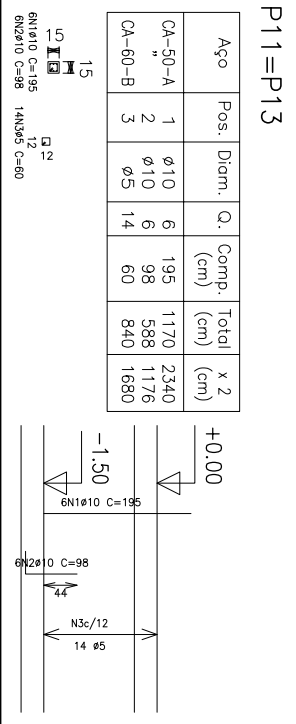
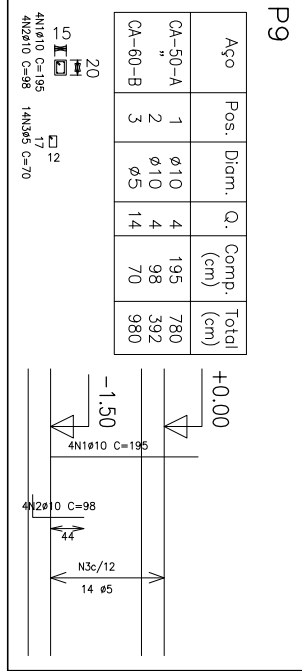
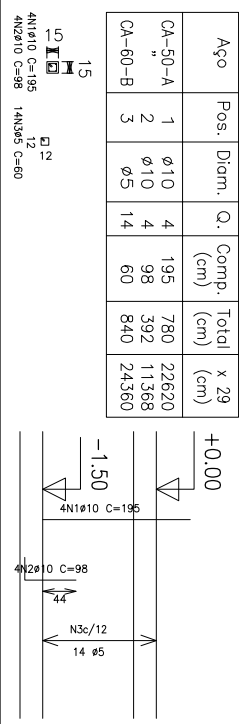
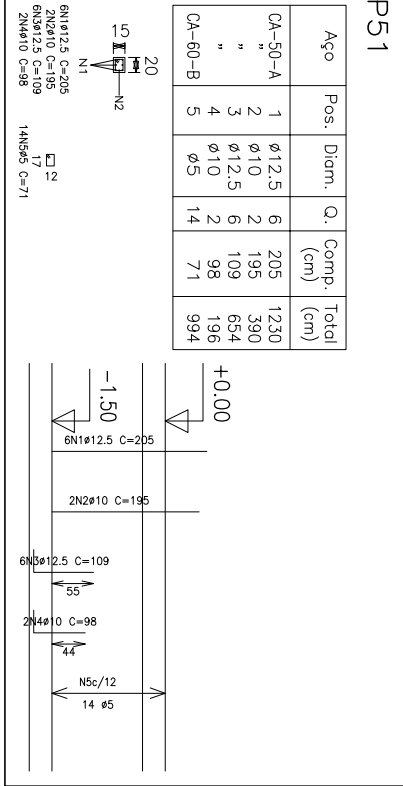
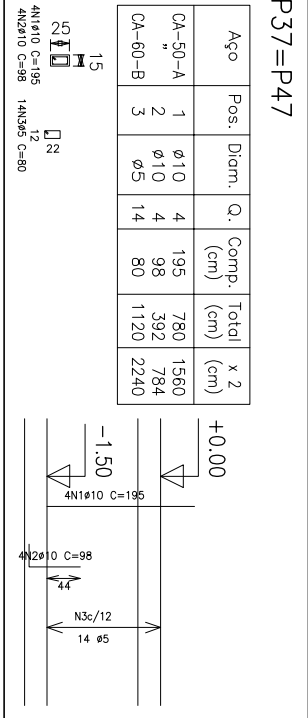
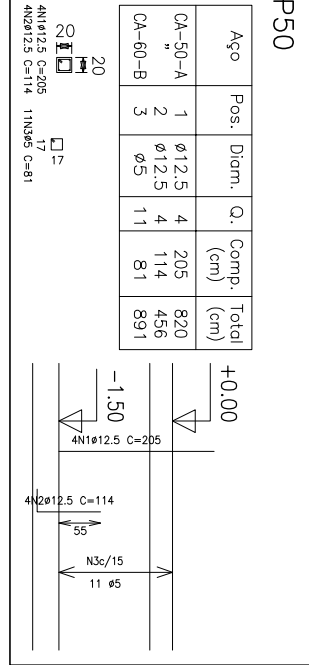
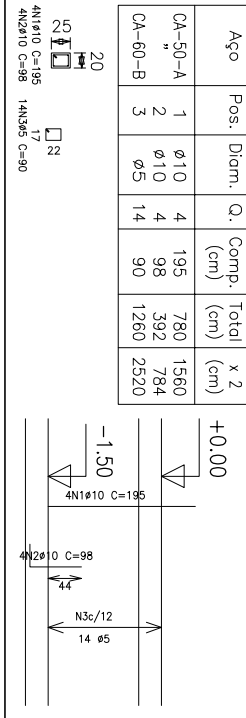


P1=P4=P7=P8=P10=P12=P14
P19=P21=P22=P24=P26=P27
P28=P29=P31=P32=P33=P34
P35=P38=P40=P41=P43=P46
P48=P54=P55=P56

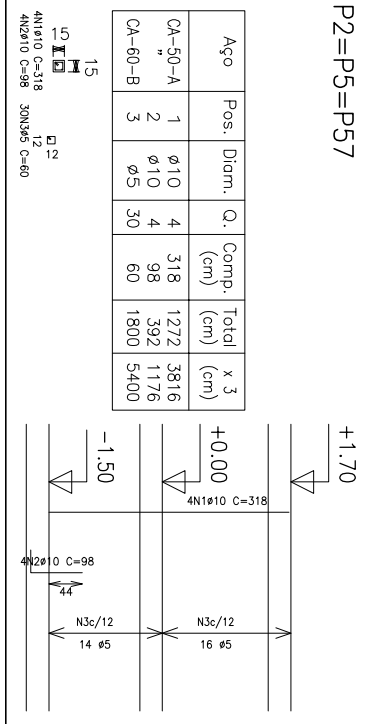
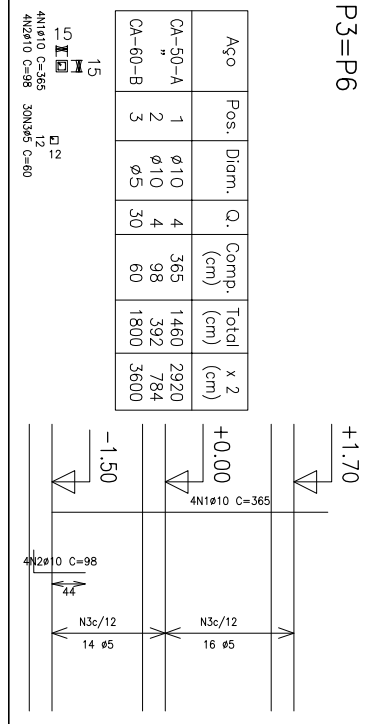


P36=P44



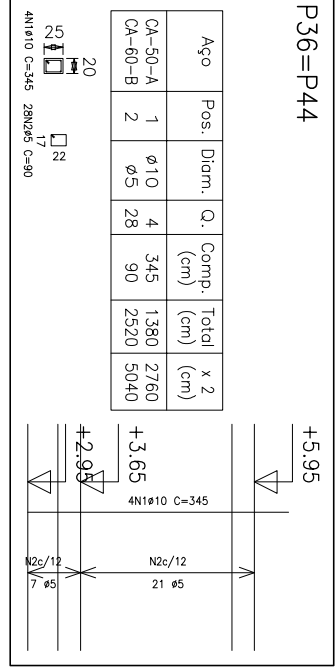
Resumo Aço			Comp. total	Peso+10%	Total
Térreo			(m)	(kg)	
Pilares					
CA-50-A	ø10		656.3	453	
	ø12.5		50.4	54	507
CA-60-B	ø5		468.4	81	81
Total					588

Pilares que terminam em
Térreo
Concreto: C20, em geral
Aço: CA-50-A e CA-60-B
Escala: 1:100



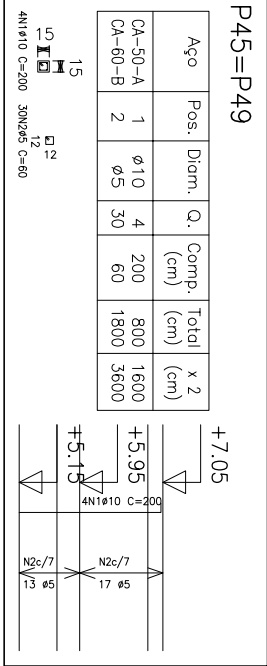
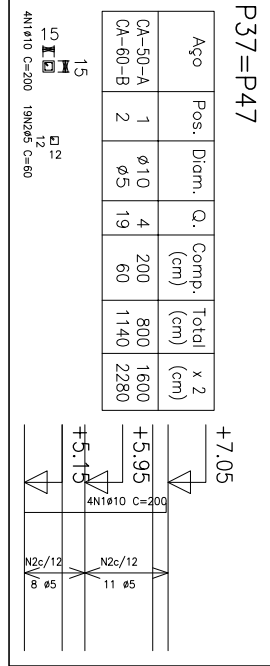
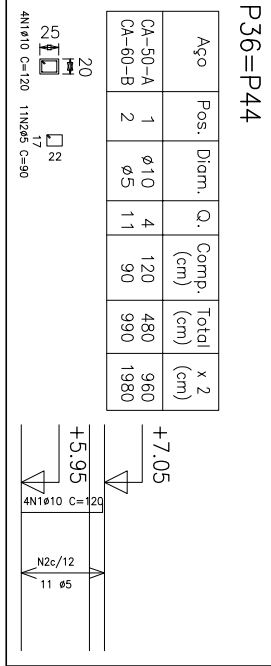
Resumo Aço	Comp. total	Peso+10%	Total
Cobertura 01	(m)	(kg)	
Pilares			
CA-50-Aø10	87.0	60	60
CA-60-Bø5	90.0	16	16
Total			76

Pilares que terminam em
Cobertura 01
Concreto: C20, em geral
Aço: CA-50-A e CA-60-B
Escala: 1:100



Resumo Aço	Comp. total	Peso+10%	Total
Entrepiso 03	(m)	(kg)	
Pilares			
CA-50-Aø10	27.6	19	19
CA-60-Bø5	50.4	9	9
Total			28

Pilares que terminam em
Entrepiso 03
Concreto: C20, em geral
Aço: CA-50-A e CA-60-B
Escala: 1:100



Resumo Aço	Comp. total	Peso+10%	Total
Cobertura 04	(m)	(kg)	
Pilares			
CA-50-Aø10	41.6	29	29
CA-60-Bø5	78.6	14	14
Total			43

Pilares que terminam em
Cobertura 04
Concreto: C20, em geral
Aço: CA-50-A e CA-60-B
Escala: 1:100

PREFEITURA MUNICIPAL DE CANDIOTA

SECRETARIO DE OBRAS

ARTÊMIO PARCANELLO

RESPONSÁVEL TÉCNICO

MARCELO VAZ LEAL

LOCAL

P.A. 8 DE AGOSTO

PROJETO

UNIDADE BÁSICA DE SAÚDE

ESPECIFICAÇÃO

PROJETO ESTRUTURAL - PILARES -

TÉRREO/COB01/ENT03/COB04

ESCALA

1:100

FRANCHA

EST-08